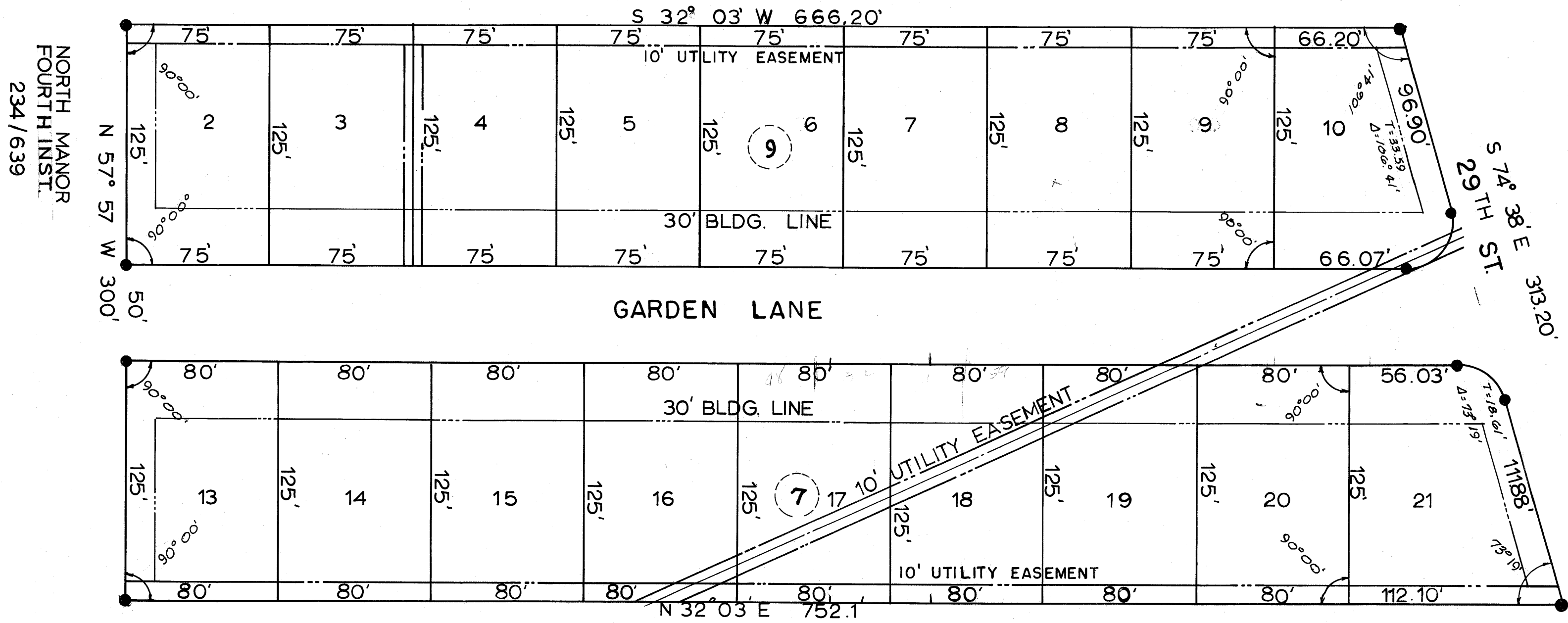


F. J. MATOUS

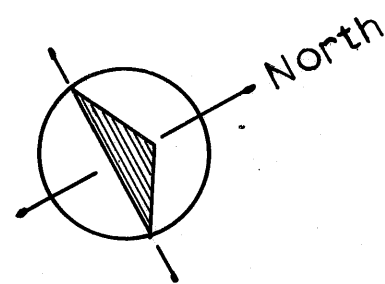


NORTH MANOR  
FOURTH INST.  
234/639

NORTH MANOR  
SECOND INST.  
218/1

GARDEN LANE

NORTH MANOR THIRD INST.  
225/339



**NORTH MANOR  
FIFTH INST.**

SCALE: 1" = 50'  
APRIL 1964  
D.R.: VOL. 239, PG. 193

259

20/1/02 on survey no